

GOODYEAR®

TIRE MANAGEMENT



HELP STREAMLINE FLEET TIRE OPERATIONS,
INCREASE EFFICIENCY AND REDUCE DOWNTIME



GOODYEAR KNOWS TIRES

AND HOW TO KEEP THEM WORKING FOR YOUR FLEET.

For more than 120 years, Goodyear® has been the tire brand you can count on to deliver excellent performance for consumer and commercial vehicles alike. Today, we're here to deliver even more. We offer a wide selection of products that can help you improve fuel efficiency, increase mileage, and enhance performance. With our premier service network and *Tire Management* program, we can help keep your fleet on the road and your business running at top speed. Let us show you how.

TOTAL MOBILITY™



Trusted Products
Full range of tires, technologies and retreads with options for every fleet.



Premier Service Network
Reliable service network of 2,300+ dealer locations nationwide.



Complete Tire Management
Unparalleled programs and tools to optimize tire assets and ROI.

goodyeartrucktires.com

WHY TIRE MANAGEMENT?

You've made an investment in your fleet's tires, so you want to be sure you get the most for your money. Which is why Goodyear *Tire Management* makes so much sense. Goodyear *Tire Management* helps you be proactive with your tire maintenance to help you anticipate problems before they take your vehicles off the road.

By monitoring your vehicles and capturing critical tire data, you can reduce unexpected repair costs and proactively direct maintenance where it's needed most.

- **TIRE PRESSURE** is often the root of most tire maintenance issues
- **MORE THAN 50% OF BREAKDOWNS** on the road are tire-related
- **OF THOSE BREAKDOWNS**, 85% are the result of improper pressure maintenance
- **CONSISTENT UNDERINFLATION** can lead to increased treadwear, decreased tire life and reduced fuel efficiency

Sources: Federal Motor Carrier Safety Association (FMCSA) and Technology Maintenance Council (TMC)



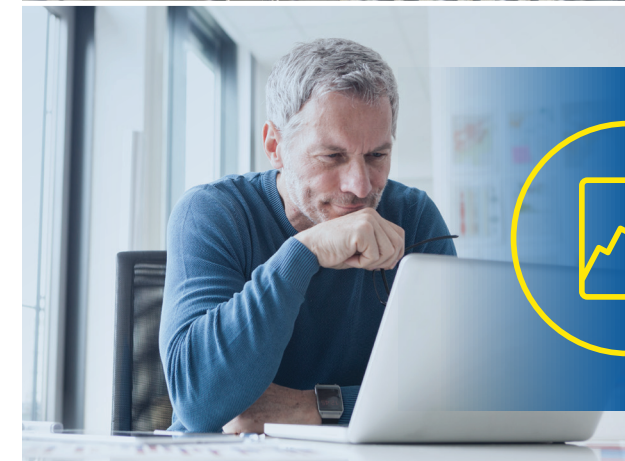
VALUABLE DATA THAT CAN HELP DELIVER BOTTOM-LINE RESULTS

Goodyear's *Tire Management* solutions help you to identify potential issues before your vehicles head out on the road. Our data-driven tools also give you the ability to plan and predict when maintenance will be required. That can add up to fewer unexpected repair expenses, less downtime and a stronger bottom line.



MONITORING

Leverage our suite of tools and technologies to capture important data from your fleet on tread depth, air pressure and other tire health information.



INSIGHTS

Use your fleet data, collected through monitoring, to help make informed maintenance decisions.



SERVICE

Count on Goodyear's premier service network for preventive, scheduled or emergency maintenance as needed.

Tire Management delivers critical information about your tires that can help you address potential issues proactively.

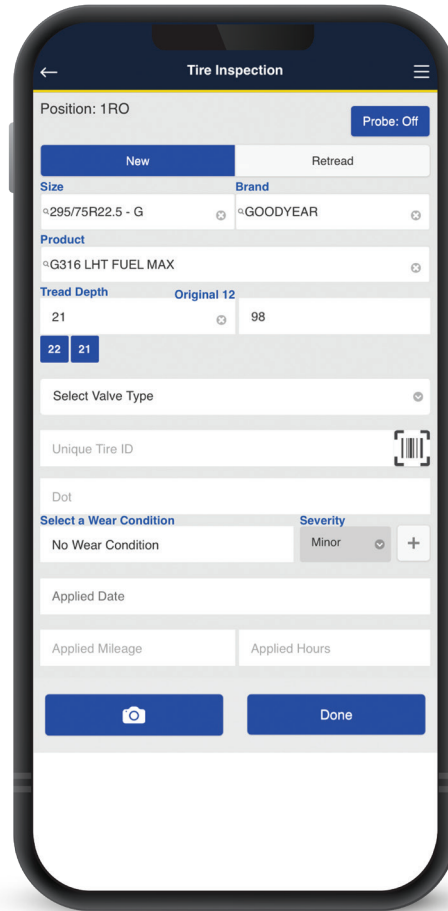
TIRE OPTIX™

DIGITAL INSPECTION TOOLSET WITH QUICKER, MORE EFFICIENT INSPECTIONS AND INSTANT ANALYTICS



DIGITAL INSPECTION

The Goodyear® Tire Optix digital inspection toolset helps make the tire inspection process more efficient and accurate. With Tire Optix, you can monitor your vehicles' tire pressure, tread depth and mileage one vehicle at a time or efficiently complete an entire yard check before trucks go back on the road. Over time, regular inspections can provide a wealth of information about your fleet to help you make better tire decisions and confidently stay ahead of issues.



Tire Optix helps log a complete picture of tire health.

BENEFITS

- MORE EFFICIENT & ACCURATE INSPECTIONS
- INCREASED FUEL EFFICIENCY
- INCREASED TREAD & TIRE LIFE
- REDUCED BREAKDOWNS
- REDUCED LABOR COSTS

CAPTURES

- NEW/RETREAD
- SIZE
- BRAND
- PRODUCT
- TREAD DEPTH
- PRESSURE
- VALVE TYPE
- UNIQUE TIRE ID
- DOT
- WEAR CONDITIONS
- WEAR CONDITION SEVERITY
- APPLIED DATE
- APPLIED MILEAGE
- APPLIED HOURS
- COMMENTS
- UNIT PICTURES
- TIRE PICTURES
- RETREAD CASING MANUFACTURER
- SCRAP ANALYSIS
- WORKLIST OF ITEMS + RESOLUTIONS

PROVIDES

- INSTANT, ACTIONABLE REPORTING
- PRODUCT PERFORMANCE ANALYTICS
- COST PER MILE & MILES TO REMOVAL DATA



ADVANCED TIRE INSPECTIONS GIVE VALUABLE DATA AND HELP OPTIMIZE YOUR TIRE INVESTMENT.



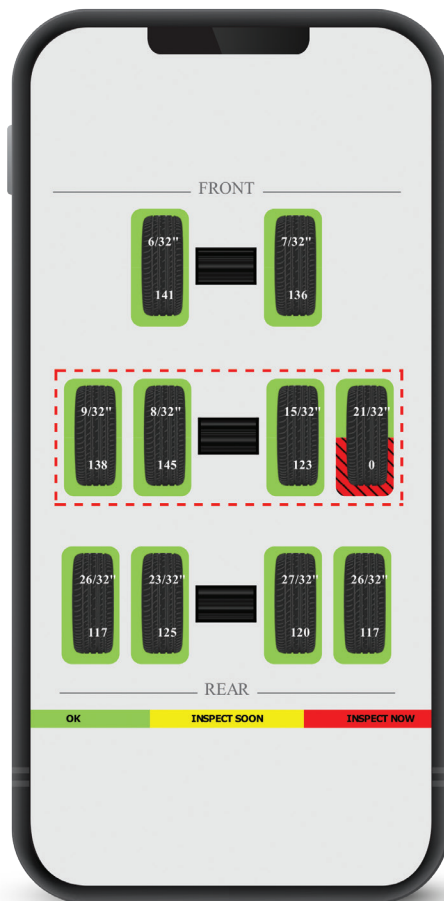
CHECKPOINT™

AUTOMATED TOOL THAT HELPS TAKE LABOR OUT OF THE TIRE INSPECTION PROCESS



AUTOMATED INSPECTION

Bring your fleet inspection to the next level with Goodyear® CheckPoint. This innovative technology enables inspection of large quantities of vehicles when they return from the road. CheckPoint offers real-time tire diagnostics, capturing tread depth as well as tire pressure with patented PressureSense Technology™. User-friendly reports help you monitor your fleet's tires so you can proactively address your service needs. Available in above-ground and in-ground systems. Want to increase uptime and reduce repair costs? CheckPoint can help.



Email alerts are immediately sent when issues are detected

BENEFITS

- NO HARDWARE OR SENSORS NEEDED ON VEHICLES
- REDUCED LABOR COSTS
- INCREASED TREAD & TIRE LIFE
- INCREASED FUEL EFFICIENCY
- REDUCED BREAKDOWNS

CAPTURES

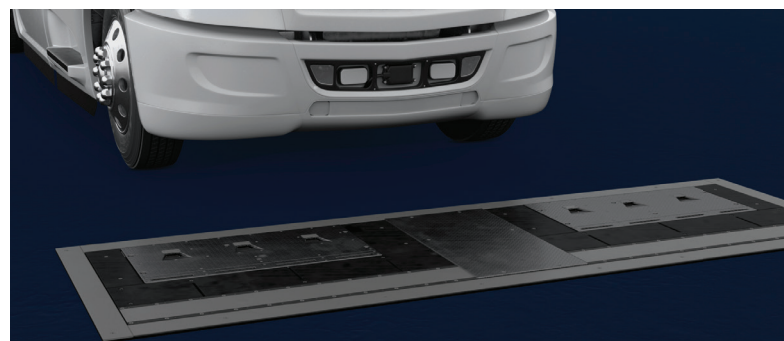
- VEHICLE ID
- AUTOMATED TREAD DEPTH
- AUTOMATED TIRE PRESSURE

PROVIDES

- LARGE-SCALE AUTOMATED INSPECTION
- ACTIONABLE ALERTS & REPORTING
- IDENTIFIES MISMATCHED DUALS



Goodyear PressureSense Technology™ includes patented on-ground sensors and an AI-driven algorithm. This technology accurately calculates tire pressure without any additional equipment needed to be installed on your trucks.



In-ground CheckPoint reader



Above-ground CheckPoint reader

THE AUTOMATED DRIVE-OVER READER HELPS SAVE FLEETS TIME AND MONEY.

TPMS PLUS™

ACTIVE TIRE MONITORING FOR CONSISTENT UPDATES FROM ANYWHERE



ACTIVE MONITORING

TPMS Plus is a connected, active monitoring system that goes beyond the benefits of traditional tire pressure dashboard monitoring. Sensors installed on the wheel or valve stem continuously transmit information back to you through a telematics box installed on the vehicle. Real-time alerts can be sent for identified temperature or pressure issues that require immediate attention. Goodyear's proprietary algorithms and predictive analytics can also identify potential leaks, so you can be proactive about resolving potential issues before they become more significant, unexpected expenses.

BENEFITS

- INCREASED TREAD & TIRE LIFE
- REDUCED BREAKDOWNS
- INCREASED FUEL EFFICIENCY
- REDUCED LABOR COSTS

CAPTURES

- TIRE PRESSURE
- GPS LOCATION
- AMBIENT TEMPERATURE AROUND THE SENSOR

PROVIDES

- REAL-TIME MONITORING
- CUSTOMIZED ALERTS AND REPORTING
- CUSTOM GEO-FENCE TECHNOLOGY
- PREDICTIVE TIRE PRESSURE ANALYTICS



TPMS Plus valve-stem sensor

VALVE STEM— OR WHEEL—MOUNTED SENSORS AVAILABLE



TPMS Plus wheel-mount sensor



REAL-TIME UPDATES HELP KEEP YOU ON TOP OF YOUR ENTIRE FLEET AND AHEAD OF POTENTIAL TIRE ISSUES.

SERVICE ACTIVATION



FLEET CENTRAL

DATA-DRIVEN DECISIONS

One of the most important parts of *Tire Management* is how you react to the data. Thankfully, data collected by Goodyear® *Tire Management* products can be integrated directly with your fleet's existing maintenance systems.

TAKE ACTION YOUR WAY

- Use your own technicians to service tire issues
- Rely on Goodyear Fleet HQ to help coordinate service
- Connect with your local Goodyear CTSN location

GOODYEAR FLEET HQ®

Fleet HQ is a 24/7 service coordination platform that offers a single point of contact for fleets. Along with emergency assistance, Fleet HQ also allows you to coordinate scheduled or preventive service and request tire deliveries from your local Goodyear supply points.

Goodyear has been operating Fleet HQ for more than a decade, and we've helped get 3 million vehicles back on the road.

TO SEE HOW FLEET HQ CAN HELP YOU AND YOUR FLEET, VISIT:
GOODYEARTRUCKTIRES.COM/NETWORK/FLEET-HQ-ACCESS.HTML

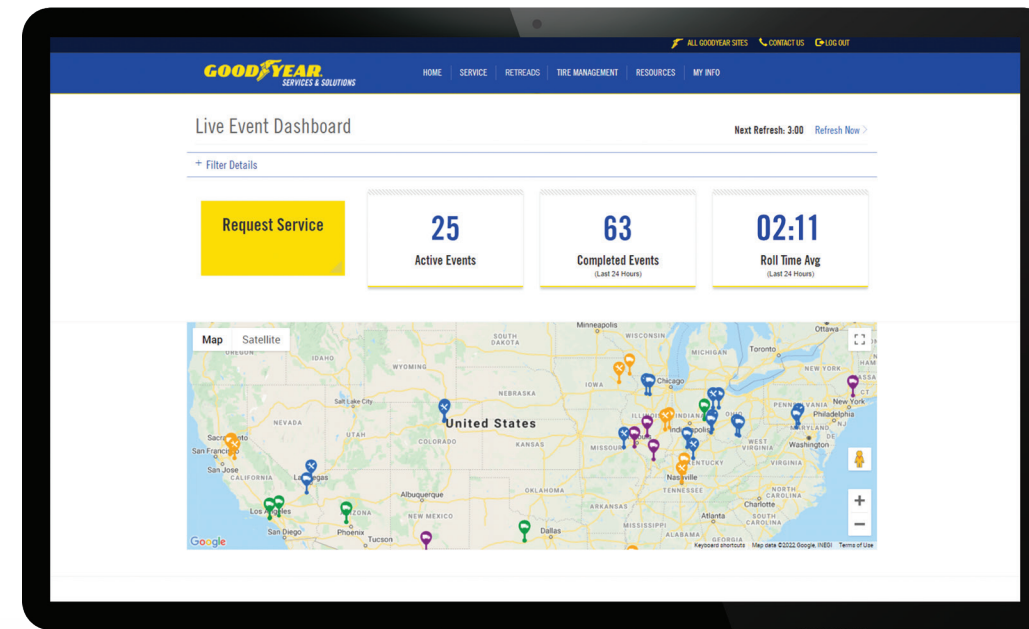
2300+ LOCATIONS

Our Commercial Tire & Service Network locations meet our high standards with proven systems and leading technologies to make the service process more efficient, whether on the road or on site.



FLEET CENTRAL: EVERYTHING IN ONE PLACE

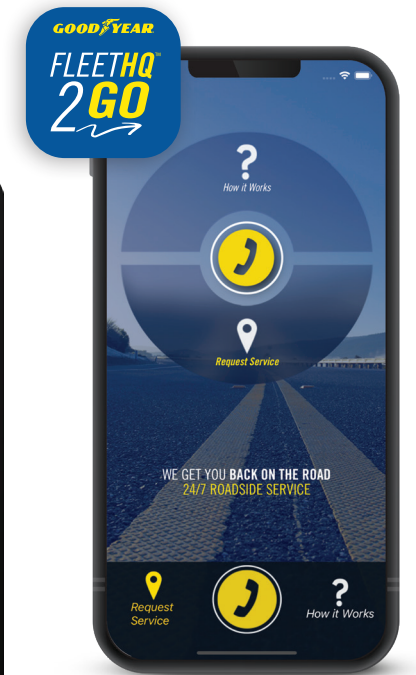
From one simple, intuitive dashboard, you can coordinate preventive services, order tires, manage deliveries, monitor tire data and so much more. Fleet Central even includes a live event dashboard that shows all your interactions with Goodyear in real time along with progress of those events.



Live Event Dashboard shows Fleet HQ events in real time.

FLEETHQ™ 2GO: THE DRIVER-DEDICATED APP

Download the FleetHQ2GO mobile app to instantly connect with Goodyear and stay up to date on service and deliveries wherever you are.



FOR EMERGENCY ROADSIDE SERVICE,
CALL 1-866-FLEETHQ (1-866-353-3847).



LET US HELP YOU REDUCE DOWNTIME, STREAMLINE OPERATIONS AND
MINIMIZE COSTS. **CONTACT GOODYEAR TODAY FOR A CONSULTATION.**

WWW.GOODYEARTRUCKTIRES.COM/REQUEST

GOODYEAR
MORE DRIVEN.