

BEST-IN-CLASS SERVICES

FULLY  COVERED

GOOD  YEAR.
FLEET HQ.



24/7 EMERGENCY ROADSIDE TIRE SERVICE

GET BACK ON THE ROAD FAST

Your call or web request to the Goodyear® Fleet HQ® Solution Center for breakdown service starts the clock for our road service network. And the clock doesn't stop until your truck is back up and running. With a roll time goal of two hours or less, Goodyear Fleet HQ wants to help you make the delivery on time.

Access 24-hour customer support by phone at 1-866-FleetHQ [1-866-353-3847]. All calls are recorded for accuracy, and detailed call reports are available at fleetHQ.com.

NO NEED TO CARRY CASH

Your credit is good throughout the Goodyear Fleet HQ network. No matter where you receive service, all charges will be consolidated and invoiced from your hometown dealer. It's just simpler that way.



STAY INFORMED ONLINE

No matter where your fleet receives service, you can always access detailed emergency roadside service reports online at goodyeartrucktires.com.



Close-up of color-coded map of breakdown activity for a Goodyear fleet

ONLINE SERVICE REQUESTS

Some of our largest fleets prefer to enter their emergency roadside service requests online rather than calling. This option is open to all fleets.

BEST-IN-CLASS SERVICES

FLEET SURVEYS

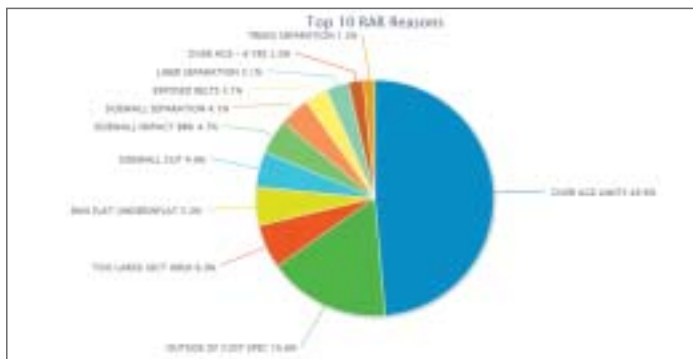
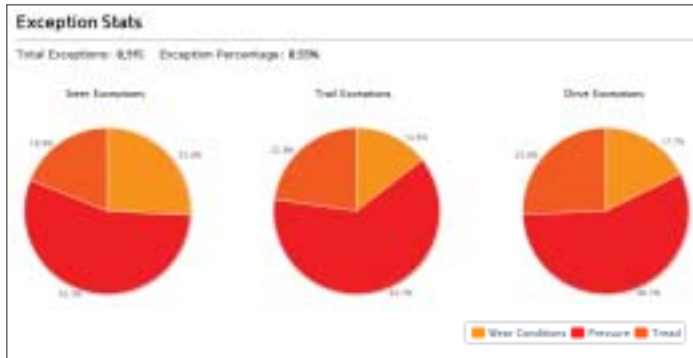


Schedule on-site tire inspections with your Goodyear Dealer or a Sales Representative. These trained professionals will record the tire pressures, tread depths, mileage and general condition of your fleet's tires. Within hours of the fleet survey, valuable tire performance information will be available to assist you in making the right business decisions.

PROFITABILITY TOOLS



Goodyear Fleet HQ offers you a powerful suite of reports to help minimize your cost of operation. Reporting is organized in four sections: tire performance, retread management, service activity and purchases. Accessing your fleet's information is easy. Simply go to goodyeartrucktires.com, log on to Fleet HQ, and then run the reports that you need.



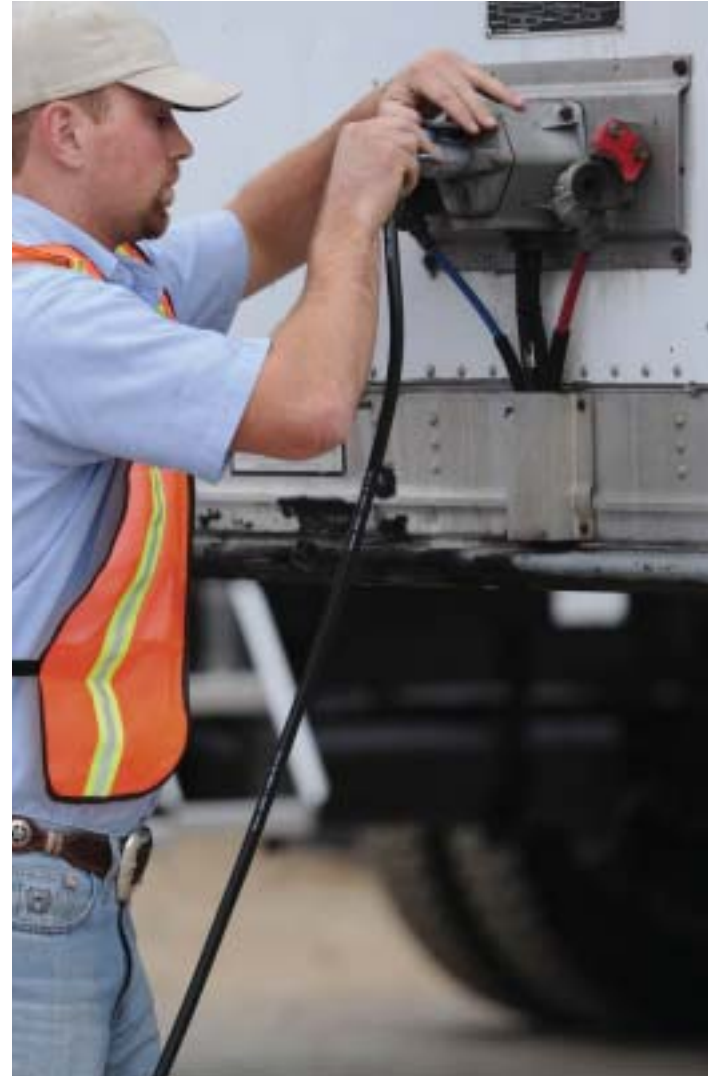
Samples of tire performance reports

TRAILER READINESS PROGRAM

IS YOUR TRAILER READY FOR THE LONG HAUL?



The Trailer Readiness program from Goodyear Fleet HQ helps you reduce expensive penalties by keeping your fleet's trailers in compliance with CSA (Compliance Safety Accountability) requirements. With regular trailer inspections that increase operational capability, the Trailer Readiness program helps to ensure that your fleet is always prepared to roll.



TO LEARN MORE CALL 1-866-FLEETHQ OR VISIT GOODYEARTRUCKTIRES.COM



THE BENEFITS OF TRAILER READINESS:

- Receive uniform trailer inspections from your trusted local Dealer or more than 2,200 nationwide locations
- Receive customized reports on essential vehicle systems to help you better manage your fleet
- Help avoid expensive fines and unnecessary emergency services
- Help improve vehicle and driver safety
- Help improve overall fleet efficiency

Have your local Dealer perform a customized fleet survey including:

- Tire pressure
- Tread depth
- Trailer lights
- Wheel seals
- Air valves
- Air lines
- Reflective tape
- Mud flaps

PREFERRED FLEET PROGRAM



Smaller fleets can enjoy some of the same benefits that larger national fleets receive when they sign up for Goodyear's Preferred Fleet Program. Regardless of the location and time of your tire breakdown, Goodyear will honor the pricing of your local Dealer, and all charges and invoices will be consolidated.

TIREPIX

STAY CONNECTED WITH PICTURES FROM YOUR ROAD SERVICE CALLS



It would be easy if your trucks could bring home every tire after a road service call. Unfortunately, this is not always possible. That's where TirePix from Goodyear Fleet HQ can help. TirePix provides photos of the tire that was replaced. It gives you information as if you were at the service call.



HERE'S HOW TIREPIX WORKS

Step 1 – A Goodyear Fleet HQ technician is dispatched to replace your tire and get your truck back on the road

Step 2 – The damaged tire is taken to a Goodyear Fleet HQ Dealer facility where two digital photos* are taken and attached to the call report

- One photo documents the D.O.T. information
- The second photo provides a close-up of the damaged area

TirePix is available to Goodyear National Accounts and all fleets. When you sign up for TirePix, you can view call reports with photos at FleetHQ.com. Your pictures will be available to view or download for at least 30 days after the report is created.

*Photos are helpful, but an examination of the actual tire is necessary to help understand the reason for removal.

NATIONAL SERVICE NETWORK

CONFIDENCE TO GO



Goodyear® Fleet HQ® has a dealer network of more than 2,200 locations across North America to offer your fleet greater peace of mind when your drivers are on the road.



Color-coded map of breakdown activity for a Goodyear national fleet.

TRUCK STOP SERVICE NETWORK:

- In-house reliable roadside service and 24/7 support to get your fleet back on the road
- Tire service, repair and sales
- High-quality new tire offerings including Goodyear, Dunlop® and Kelly®
- Easily accessible diesel fueling stations
- Light mechanical and inspection services including D.O.T. inspection, oil changes, tire repair and service, and Fleet HQ customer service and support

Other conveniences may include:

- One-stop shopping for all your traveling needs
- Restroom and shower facilities
- Hot foods, snacks and refreshments
- Banking services



MORE THAN 300 LOCATIONS ACROSS THE U.S.

Truck Stop Service Network partners include:

- Wingfoot Truck Care Centers
- Travel Centers of America
- Petro Truck Stops
- PTP Truckstop Network
- Boss Truck Shops
- Independent shops



NATIONAL PRICING

CONSISTENT PRICING AND BILLING



Receive consistent national pricing and consolidated billing on quality Goodyear and Dunlop products from any Goodyear Fleet HQ Dealer in the country. There is no need to carry cash.

THE TOTAL SOLUTION TO HELP REDUCE OPERATING COSTS

To learn how Goodyear's industry-leading tires, services and profitability tools help to provide your fleet a total solution, visit goodyeartrucktires.com, or call 1.866.FleetHQ.

goodyeartrucktires.com

©2013 The Goodyear Tire & Rubber Company. All rights reserved.



CT-03-44354-03/13